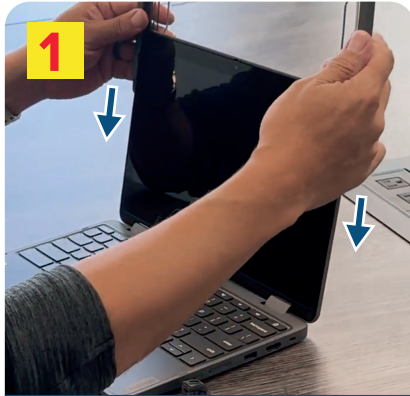


Extreme Shell- ESF/ESFL/ESF3

Turn over for important instructions on removing the case



All models: Hold the top piece above the device screen. Align the lip of the case with the device, then push down gently to slide the lip of the case around the sides of the screen until you can't slide it any further.



ESF, -F2, and -F3 models: Repeat the process for the bottom piece, sliding the case onto the device until it is completely on.
-FL and -FL3 models: Position the bottom piece below the device. (It does not slide on as shown above.)

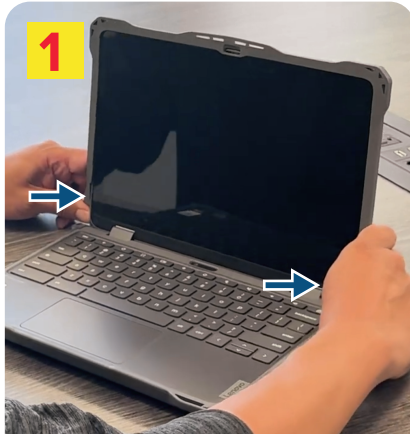


ESF, -F2, and -F3: Locate the two clips on the back of the bottom piece. Pop them up to lock the case onto the device.
-FL and -FL3 models: Locate the three clips on each side of the bottom piece. Pop them up to lock the case onto the device.

NOTE: If you're using the optional hand strap, you may find it easier to add it before installing the case. To add the strap, thread it through the four cutouts found on both the top and bottom pieces. See installation video at www.maxcases.com/strapinstall or scan QR code.



Extreme Shell-ESF/ESFL/ESF3



All models: Carefully push the bottom corners of the top piece out slightly. Next, slowly slide the top upwards to loosen it.



All models: Hold top case on both sides and steadily slide it up and completely off the device.

Important: do not remove the top case by prying the edges as this may potentially separate the screen bezel and lead to damage.



ESF, -F2, and -F3 models: First, (a) open the clips on the back corners, then (b) slowly and steadily slide the case off.

-FL and -FL3 models: Open the six back clips on the back, starting with the back corners.